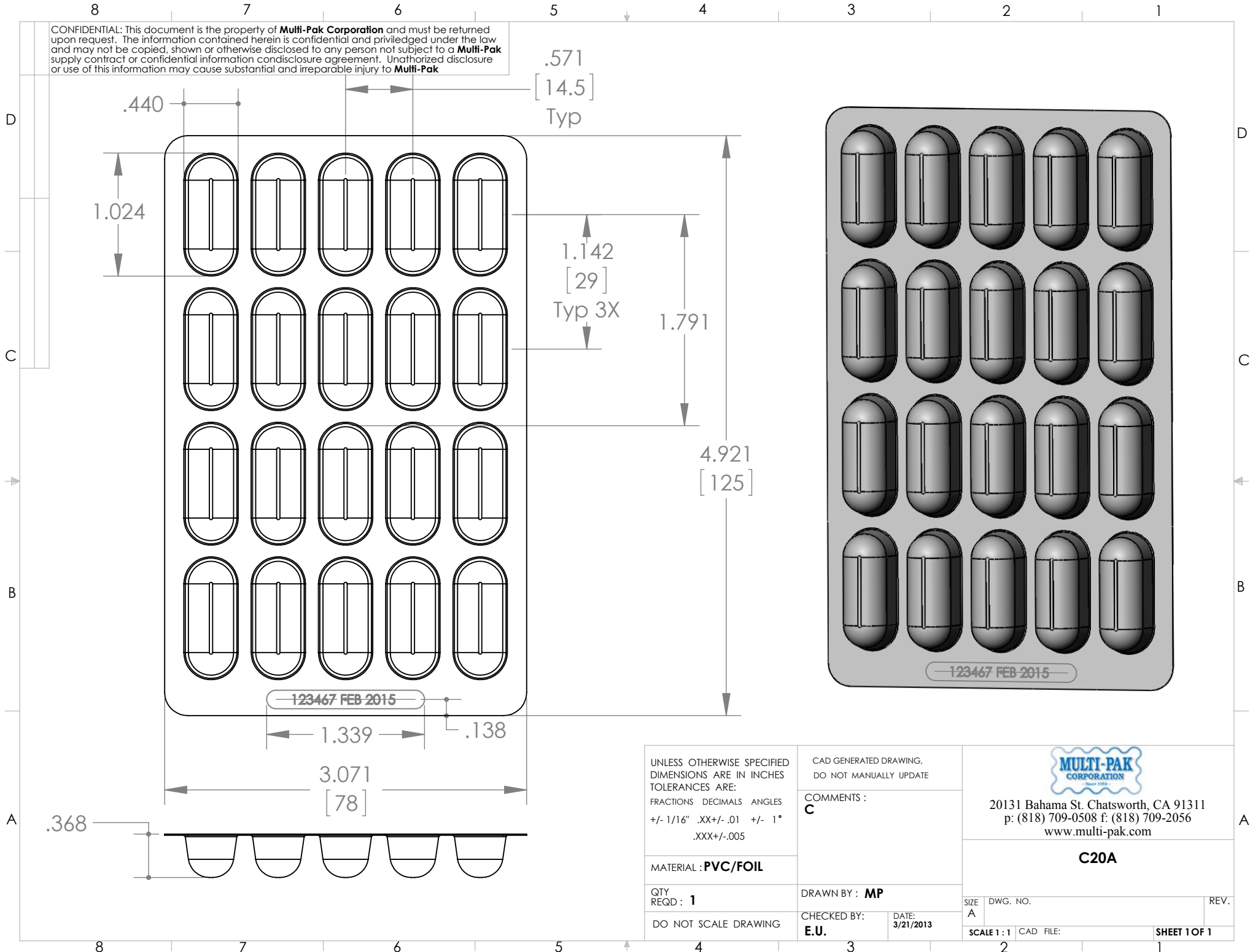


CONFIDENTIAL: This document is the property of Multi-Pak Corporation and must be returned upon request. The information contained herein is confidential and privileged under the law and may not be copied, shown or otherwise disclosed to any person not subject to a Multi-Pak supply contract or confidential information disclosure agreement. Unauthorized disclosure or use of this information may cause substantial and irreparable injury to Multi-Pak



.571
[14.5]
Typ

.440

1.024

1.142
[29]
Typ 3X

1.791

4.921
[125]


123467 FEB 2015

1.339

.138

3.071
[78]

.368

| | | |
|---|--|--|
| UNLESS OTHERWISE SPECIFIED DIMENSIONS ARE IN INCHES TOLERANCES ARE: FRACTIONS DECIMALS ANGLES +/- 1/16" .XX+/- .01 +/- 1° .XXX+/- .005 | CAD GENERATED DRAWING. DO NOT MANUALLY UPDATE |  20131 Bahama St. Chatsworth, CA 91311 p: (818) 709-0508 f: (818) 709-2056 www.multi-pak.com |
| | COMMENTS : C | |
| MATERIAL : PVC/FOIL | C20A | |
| QTY REQD : 1 | DRAWN BY : MP | SIZE DWG. NO. REV. |
| DO NOT SCALE DRAWING | CHECKED BY : E.U. | DATE: 3/21/2013 |
| | SCALE 1 : 1 | CAD FILE: SHEET 1 OF 1 |